

# PRO-HC

Use this rugged, professional-grade Wi-Fi controller for residential and light commercial applications.

## KEY BENEFITS

- Number of stations:
  - 6, 12, or 24 (fixed models)
- Standard programming option allows for 6 independent irrigation programs and 6 start times per program
- Advanced programming option provides station-based programming with up to 6 total start times available
- 2 sensor inputs available for use with any Klik sensor and HC Flow Meter
- 1 P/MV output for pump start relay and master valve activation
- Wi-Fi enabled for quick connection to Hydrawise software
- 7 cm full-colour touchscreen display for simple programming at the control panel
- Built-in milliamp sensor for wire fault detection and alerts

## OPERATING SPECIFICATIONS

- Transformer input: 120 VAC or 230 VAC
- Transformer output (24 VAC): 1 A
- Station output (24 VAC): 0.56 A
- P/MV output (24 VAC): 0.28 A
- 2.4 GHz (only) Wi-Fi router compatible, 802.11 b/g/n 20 MHz
- Supported security protocols: WPA/WPA2 Personal (only) TLS, SSL
- Approvals: IP44 (outdoor), UL, cUL, FCC, CE, RCM, ISED
- Warranty period: 2 years

## USER-INSTALLED OPTIONS

- Wireless HC Flow Meter option permits wireless flow monitoring for Hydrawise enabled systems

Try Hydrawise Software today, hardware-free at [hydrawise.com](http://hydrawise.com)

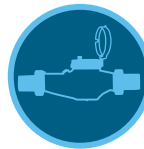


**Pro-HC**  
(plastic indoor)  
Height: 21 cm  
Width: 24 cm  
Depth: 8.8 cm

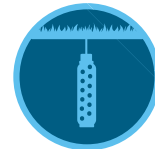


**Pro-HC**  
(plastic outdoor)  
Height: 22.8 cm  
Width: 25 cm  
Depth: 10 cm

Compatible with:



HC Flow Meter



Soil-Clik Sensor



Rain-Clik Sensor

PRO-HC - SPECIFICATION BUILDER: ORDER 1 + 2 + 3 + 4							
1	Model	2	Transformer	3	Indoor/Outdoor	4	Options
	<b>PHC-6</b> = 6-station controller <b>PHC-12</b> = 12-station controller <b>PHC-24</b> = 24-station controller		<b>00</b> = 120 VAC <b>01</b> = 230 VAC		<b>(blank)</b> = Outdoor model (internal transformer) <b>i</b> = Indoor model (plug-in transformer)		<b>(blank)</b> = No option <b>E</b> = 230 VAC with European connections, no plug <b>A</b> = 230 VAC with Australian connections (outdoor model has internal transformer with plug)

Example:  
PHC-2400 = 24-station, 120 VAC, outdoor plastic controller



**Smart WaterMark**  
Recognised as a responsible water-saving tool